



STATESMAN
H O M E S

UNBEATEN ON PRICE & QUALITY

THE EVANDALE
LOT 189 CUSTANCE AVENUE, WHYALLA

KEYS 4 CASH
\$10,000*
CASH BACK
AT SLAB POUR
*Conditions Apply

SINGLE GARAGE TO INCLUDE:

- ✓ 22.86m² garage (under main roof)
- ✓ Raised ceiling
- ✓ 100mm Reinforced concrete slab
- ✓ Brick piers x 2
- ✓ Roller doors to garage x 2
- ✓ Internal access door to kitchen

FRONT ELEVATION TO INCLUDE:

- ✓ Choice of Classic elevations

INSULATION TO INCLUDE:

- ✓ R2.5 to external walls
- ✓ R5.0 to ceiling (R1.5 to Garage)

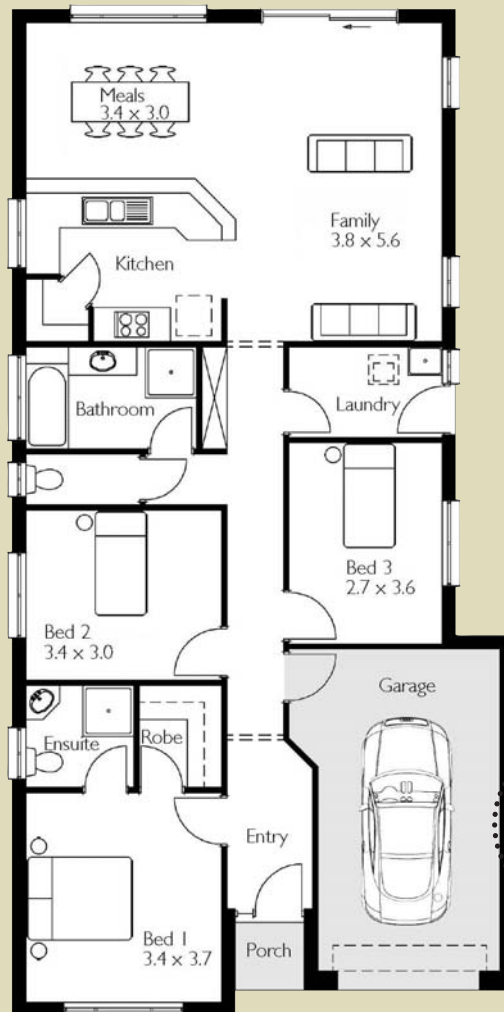
KITCHEN TO INCLUDE:

- ✓ Overhead cupboards to kitchen
- ✓ Overhead cupboards to fridge recess
- ✓ Ducted retractable rangehood
- ✓ Dishwasher provision

FEATURE ITEMS TO INCLUDE:

- ✓ Reverse cycle airconditioning
- ✓ Carpet to bed 1, 2, 3 & WIR
- ✓ Tiling to the remainder
- ✓ Drawer units to ensuite
- ✓ Rainwater bypass system
- ✓ Flyscreens to windows
- ✓ Footings allowance
- ✓ Plus much more...

Living Area 118.57 sq.m.
Width 8.80m
Depth 17.74m
Single garage 22.86 sq.m.
Total 142.77 m²



15.33
Squares

House and Land only
\$289,800
Or \$351* per week
Incl. Single Garage

BILL HARDING 0417 892 704

Display Villages open: Weekends, Mon & Wed 1-5pm. Excluding Whyalla, open: weekends, 1-5pm. Visit www.statesman-homes.com.au for more information, or call 08 8366 0080.

*CONDITIONS APPLY. BUILDER LICENCE G8969. ALL PICTURES, PLANS AND ELEVATIONS ARE FOR ILLUSTRATION PURPOSES ONLY. PRICE MAY CHANGE WITHOUT NOTICE. © COPYRIGHT 2010 (BH001_WHYALLA_EVANDALE)

*Weekly repayments are based on interest only variable rate loan of 7% with 10% deposit. Lending criteria, terms and conditions apply. Variable rate as at 1/10/10 and is subject to change.