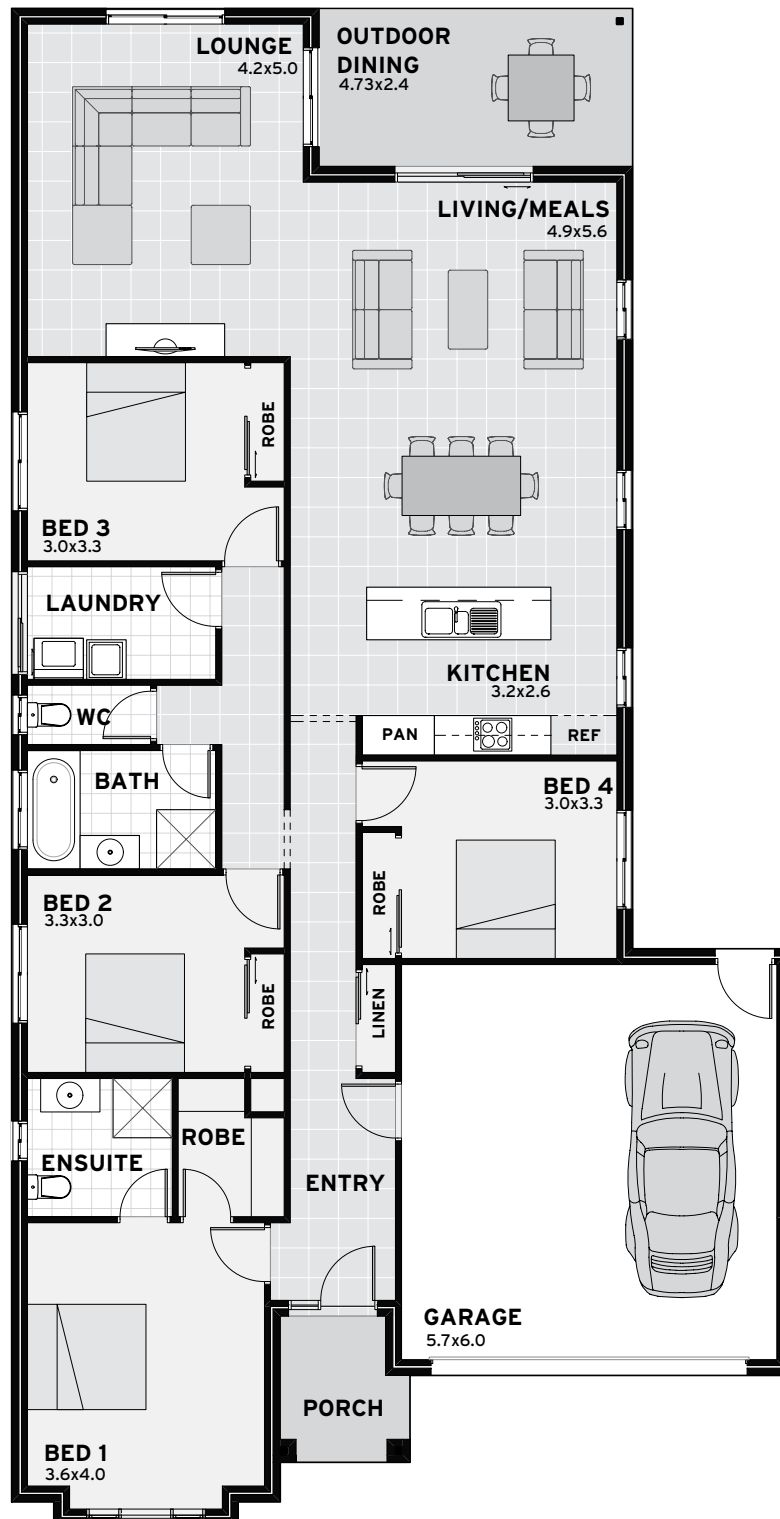


Adelaide 24



Adelaide 24

4 Bedrooms
2 Bathrooms
Double Garage
Living/Meals
Lounge
Kitchen
Laundry
Outdoor

Living 169.34m²
Garage 38.04m²
Outdoor Living 11.35m²
Porch 3.87m²
Total 222.60m²
Width 11.81m Depth 23.14m

Room sizes shown are approximate only, please refer to final working drawings for actual sizes. Each office is independently owned and operated. Plans are protected by copyright. Prices, inclusions and plans are subject to variation without notice. Display/show home designs and inclusions vary throughout Australia and New Zealand and are provided as a guide only. Please refer to your building contract for the specific design and inclusion details of your new home. Artist impressions are indicative only. CAV17565. Produced by www.totocommunications.com.au